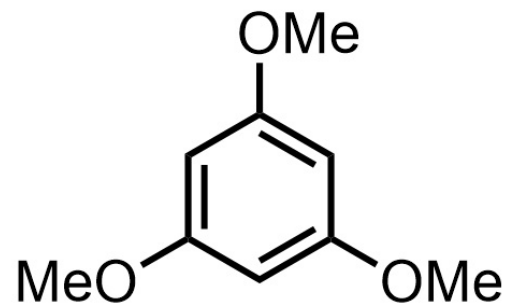
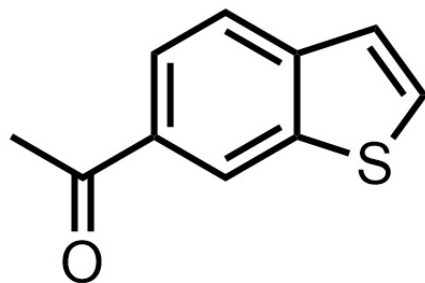


CDCl₃
400 MHz



8.51
7.97
7.95
7.87
7.85
7.66
7.65
7.39
7.38

6.09

3.76

2.68

0.90

0.94

0.96

0.94

0.96

3.00

9.52

2.85

16 15 14 13 12 11 10 9 8 7 6 5 4 3 2 1 0 -1 -2 -3 -4
f1 (ppm)